

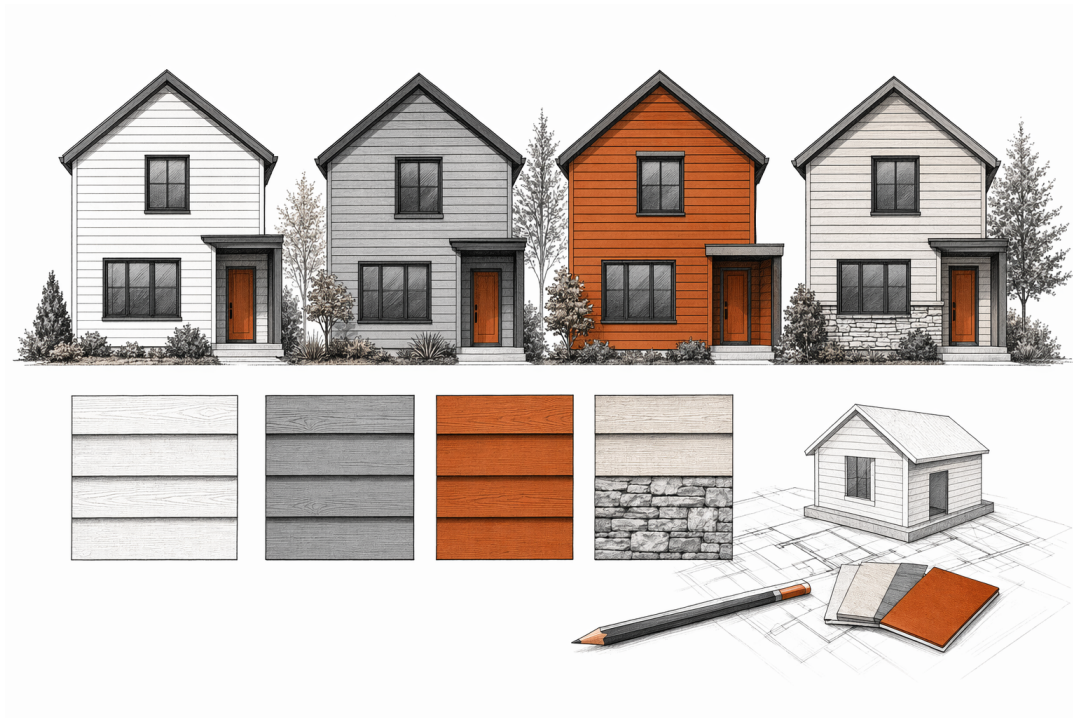
Siding Cost Worksheet

Use this worksheet to estimate your siding project before you talk to contractors. Per-square-foot figures are typical installed estimates, not quotes — your real price depends on home size and height, material, removal of old siding, and your area.



Step 1 — Estimate your wall area

Measure each wall (width x height) and add them up. Add roughly 10% for waste, trim, and gables. This total is your approximate siding square footage.



Step 2 — Pick a material range

Typical installed cost per square foot:

- Vinyl: \$4 – \$9
- Fiber cement: \$8 – \$15
- Wood / engineered wood: \$7 – \$16
- Metal (steel/aluminum): \$8 – \$18
- Stucco: \$9 – \$20

Step 3 — Do the math

Square footage x cost per square foot = a rough budget range. Run the low and high end so you have a realistic window before any contractor visits.



Step 4 — Add the extras people forget

- Removal and disposal of old siding
- Repairs to sheathing, flashing, or rot found underneath
- House wrap / moisture barrier
- Trim, soffit, and fascia
- Permits where required

Step 5 — Compare like for like

When estimates arrive, make sure each one covers the same material, the same removal, and the same trim. The cheapest phone number is rarely the real bill.



SidingLedger is a free matching service, not a siding contractor. The information in this guide is general and educational. Cost figures are typical per-square-foot estimates, not quotes. Always hire licensed, insured, and bonded siding contractors, verify their credentials yourself, and confirm price and scope in writing before any deposit.